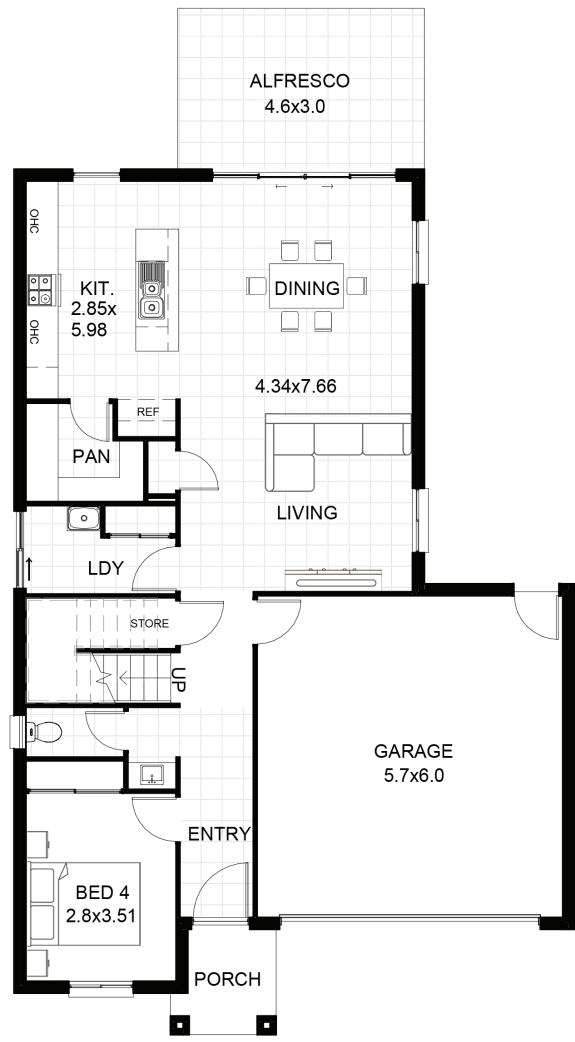


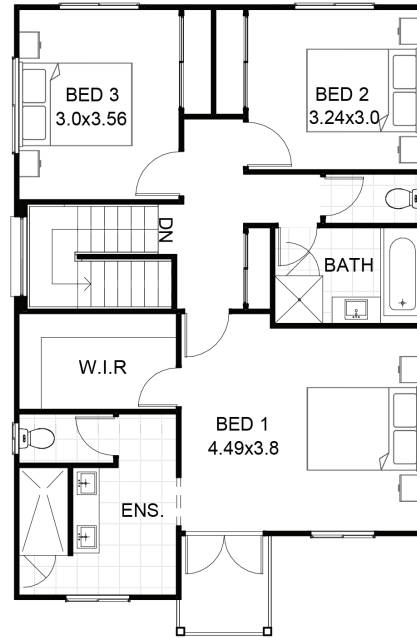
# PARKWAY SERIES



LOWER LEVEL

10.45

19.14



UPPER LEVEL

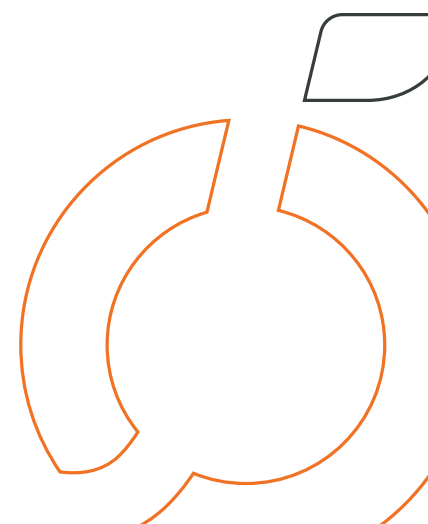
7.65

11.74



## PARKWAY 230 BP

Min. Lot Frontage	12.5m
Width	10.45m
Length	19.13m
Lower Living Area	130.3m <sup>2</sup>
Upper Living Area	79.3m <sup>2</sup>
Porch Area	3.5m <sup>2</sup>
Patio / Alfresco Area	13.8m <sup>2</sup>
Balcony	3.2m <sup>2</sup>
Total Floor Area	230.1m <sup>2</sup>



OFFICE & STYLE IT STUDIO

Unit 3 Building 6, 205 Leitchs Rd,  
Brendale, Queensland, 4500

07 3889 7775

info@ojpippin.com.au

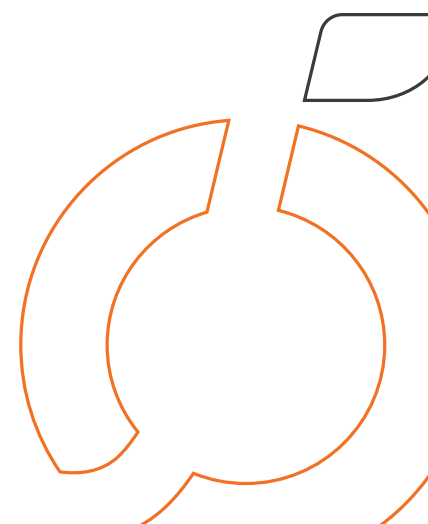
WWW.OJPIPPIN.COM.AU

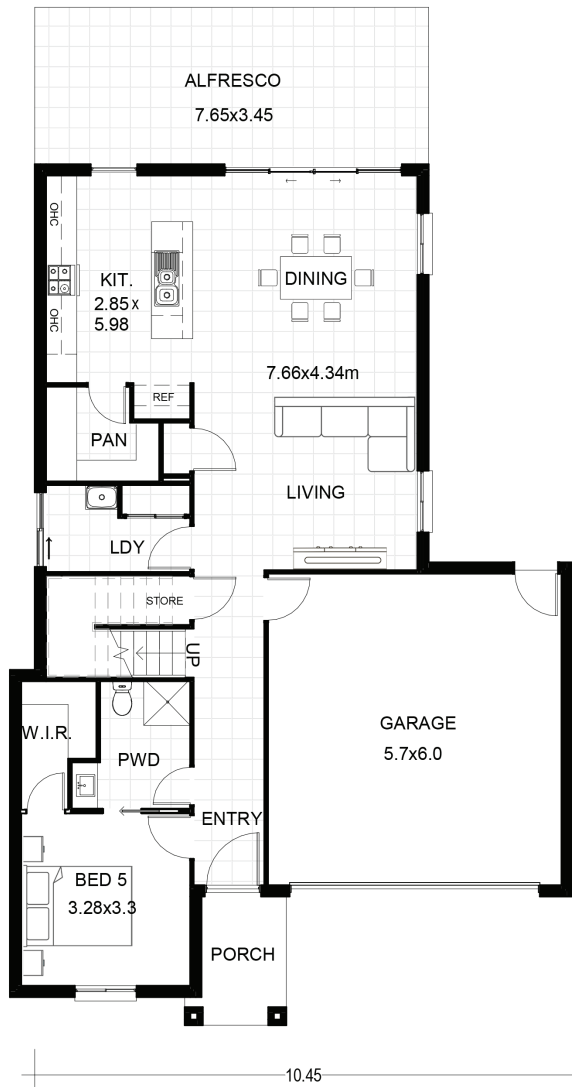
Disclaimer: This document is produced for marketing and illustration purposes and should only be used as a guide. Please note all plans are not to scale. All plans are copyright, no part may be used, reproduced or copied by any means or in any form without the prior permission of the copyright owner. QBCC 1209968.



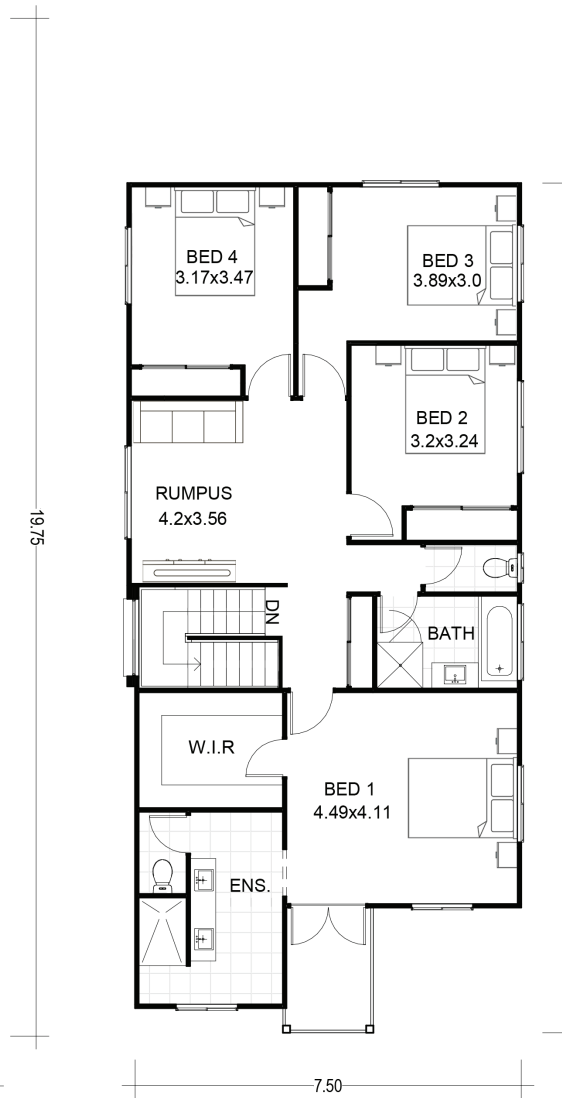
## PARKWAY 243 BP

Min. Lot Frontage	12.5m
Width	10.45m
Length	19.13m
Lower Living Area	130.3m <sup>2</sup>
Upper Living Area	92.2m <sup>2</sup>
Porch Area	3.5m <sup>2</sup>
Patio / Alfresco Area	13.8m <sup>2</sup>
Balcony	3.2m <sup>2</sup>
Total Floor Area	243.0m <sup>2</sup>





LOWER LEVEL



UPPER LEVEL



## PARKWAY 280 BP

Min. Lot Frontage	12.5m
Width	10.93m
Length	19.75m
Lower Living Area	136.1m <sup>2</sup>
Upper Living Area	112.6m <sup>2</sup>
Porch Area	4.4m <sup>2</sup>
Patio / Alfresco Area	23.0m <sup>2</sup>
Balcony	4.1m <sup>2</sup>
Total Floor Area	280.2m <sup>2</sup>

