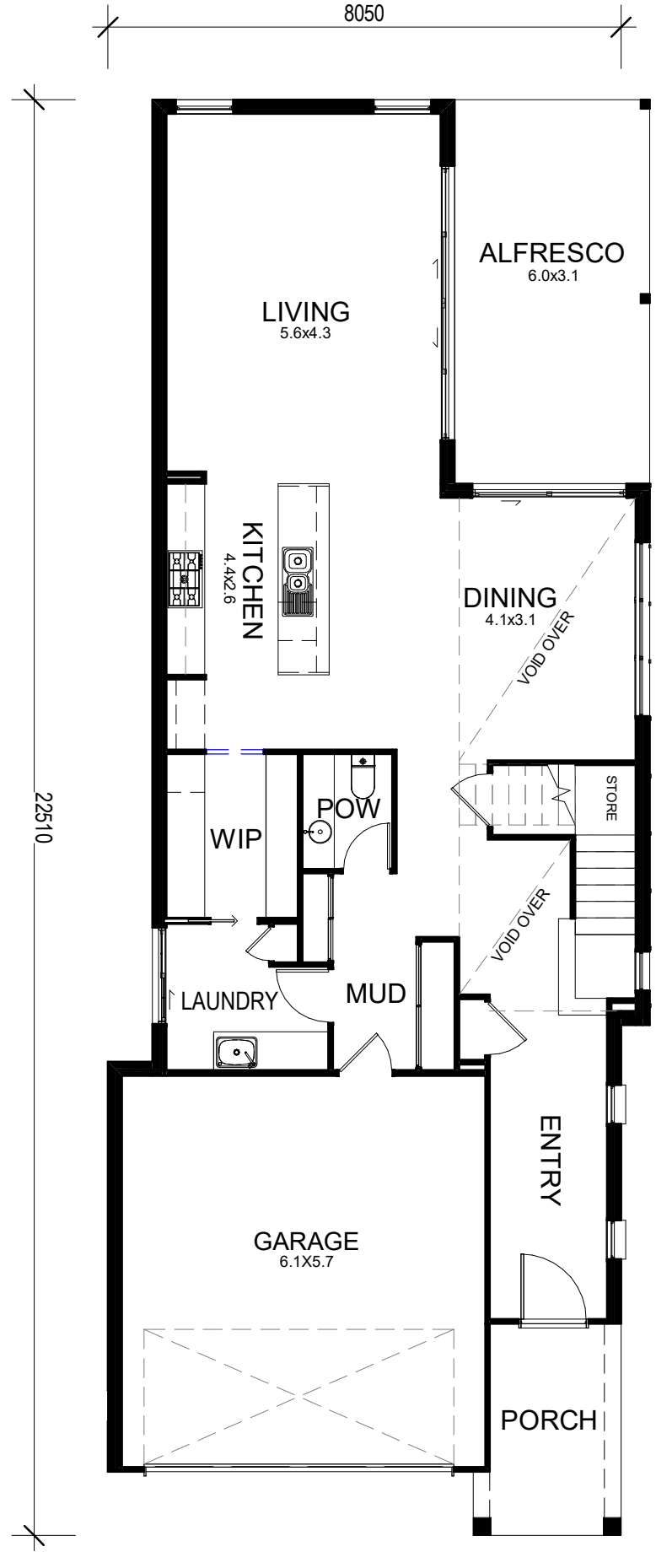
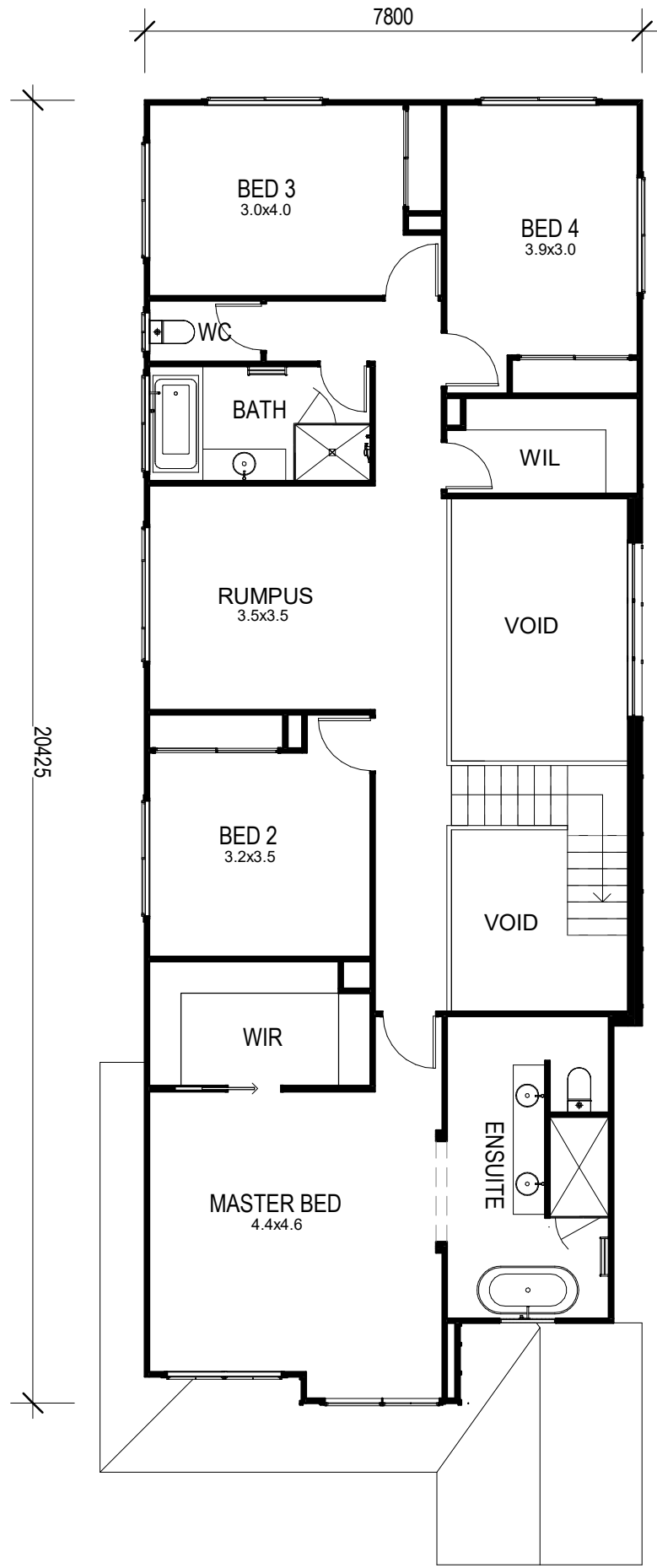


RIDGE - 10M



FLOOR AREAS	
UPPER FLOOR	152.6 m ²
LOWER FLOOR	146.0 m ²
ALFRESCO	18.4 m ²
PORCH	7.1 m ²
TOTAL AREA	324.1 m²



QBSA LIC NO : 1209968 ABN : 50 150 026 921
 UNIT 3, BUILDING 6, 205 LEITCHS ROAD, BRENDALE Q 4500
 phone (07) 3889 7775 fax (07) 3889 7772
 WWW.OJPIPPIN.COM.AU

HOUSE AND LAND PACKAGES

© COPYRIGHT, O.J. PIPPIN HOMES PTY LTD.