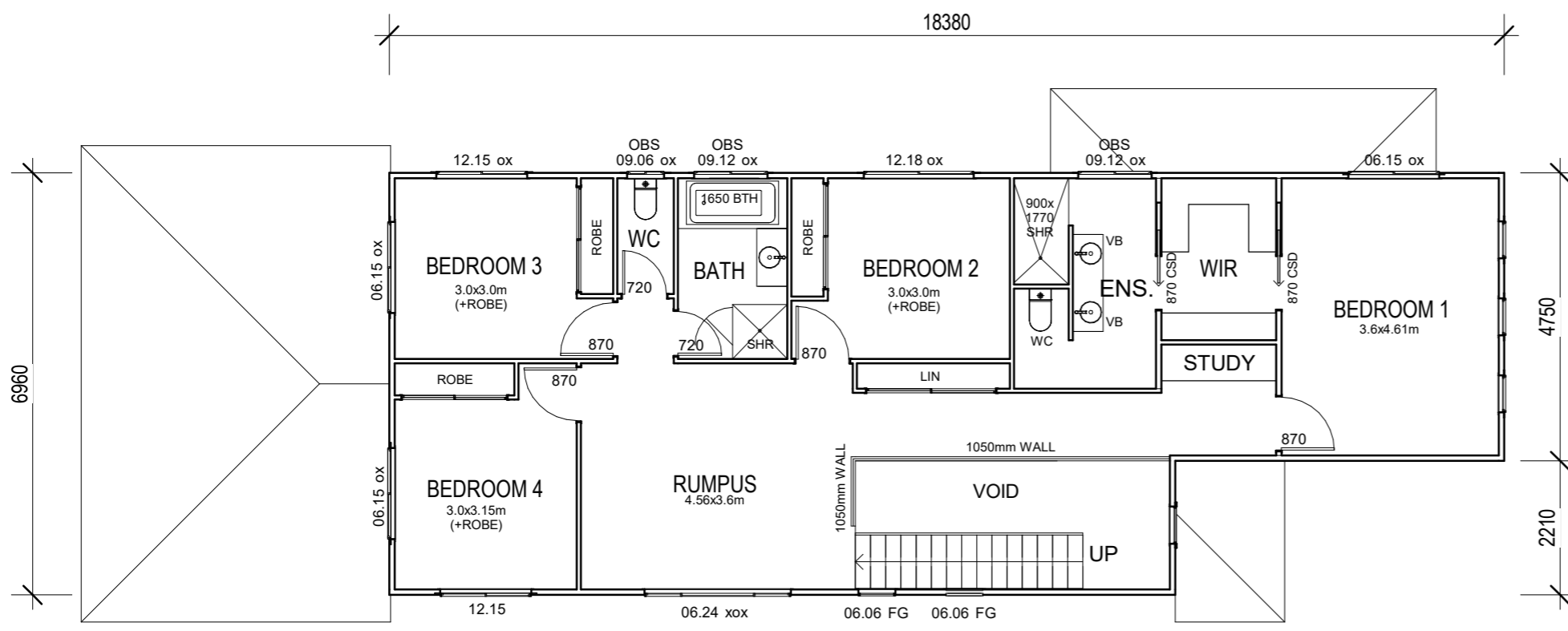
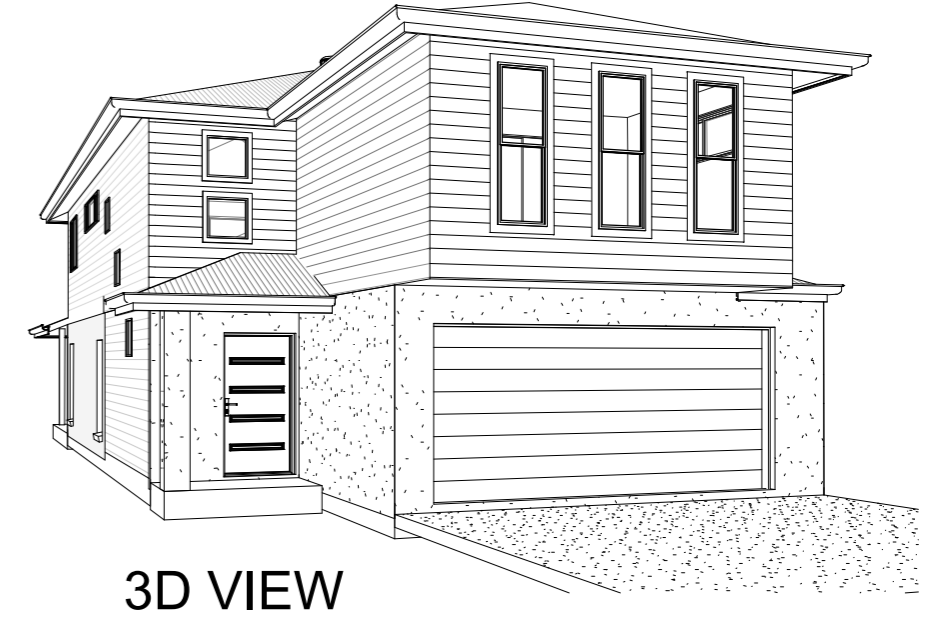
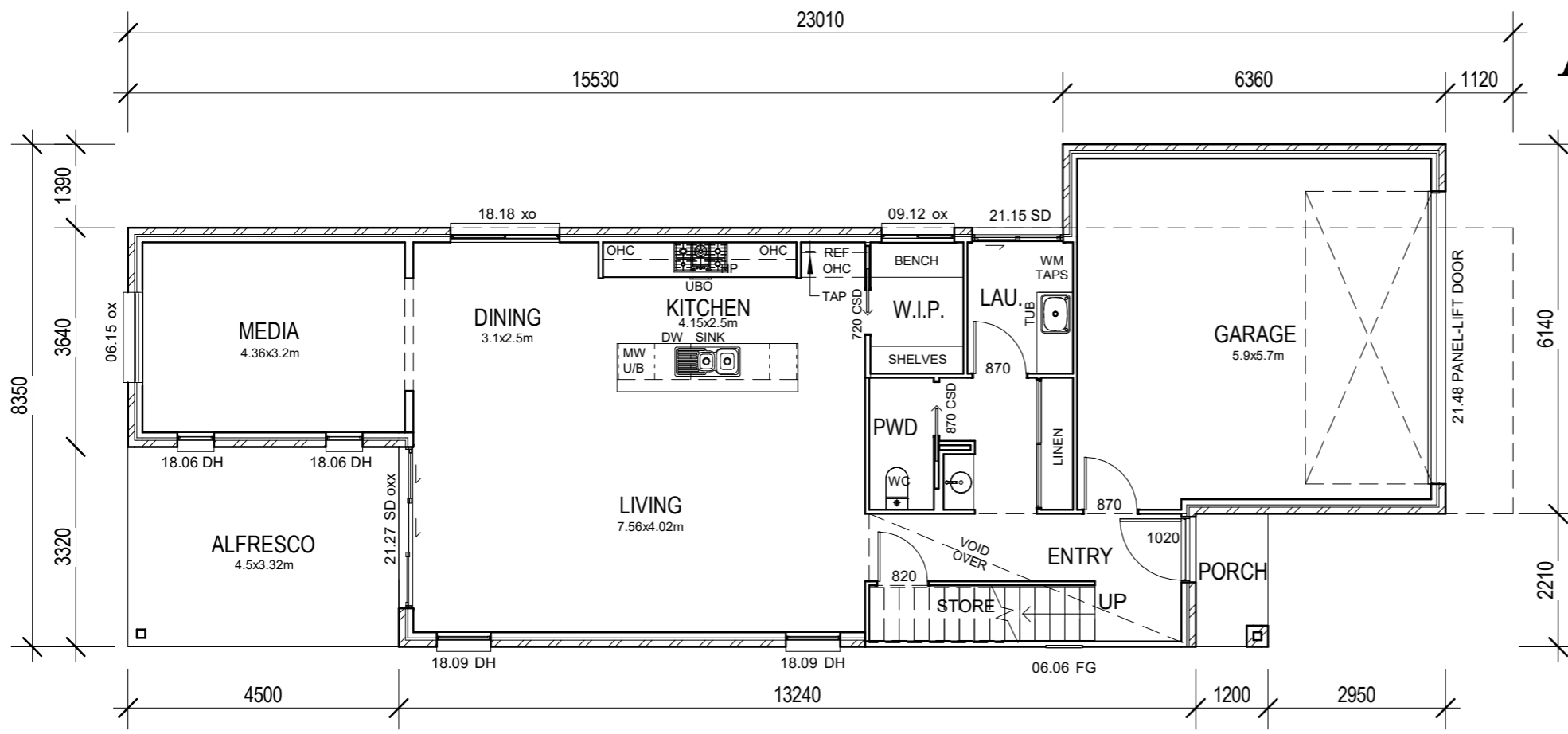


19/01/2023 2:50:13 PM

# ABBY 270 - WINDSOR



FLOOR AREAS	
LOWER FLOOR	137.1 m <sup>2</sup>
UPPER FLOOR	115.8 m <sup>2</sup>
ALFRESCO	14.9 m <sup>2</sup>
PORCH	2.7 m <sup>2</sup>
<b>TOTAL AREA</b>	<b>270.5 m<sup>2</sup></b>



QBSA LIC NO : 1209968 ABN : 50 150 026 921  
 UNIT 3, BUILDING 6, 205 LEITCHS ROAD, BRENDALE Q 4500  
 phone (07) 3889 7775 fax (07) 3889 7772  
 WWW.OJPIPPIN.COM.AU

**HOUSE AND LAND PACKAGES**

© COPYRIGHT, O.J. PIPPIN HOMES PTY LTD.

O:\Drafting\Current Drafting\OJ Pippin Masters\2022 house range\2 STORY\ABBY\Abby 270 - Windsor.nvt